



Florida's Child Welfare Prepaid Mental Health Plan

The Community Based
Care Partnership, Ltd.

*A Partnership between CBC of
Seminole County, Inc. & Magellan
Behavioral Health of Florida, Inc.*

Historical Context - Florida Statute 409.912.8

- In the spring of 2006 the FCC Behavioral Health Network Board was formed. They began work on a response to the Florida Agency for Health Care Administration RFP 0603 for a Child Welfare Prepaid Mental Health Plan (CWPMHP).
- Through an ITN process, FCCBHN selected Magellan Behavioral Health of Florida, Inc. and a Memorandum of Agreement was set forth to establish roles and responsibilities within the partnership.

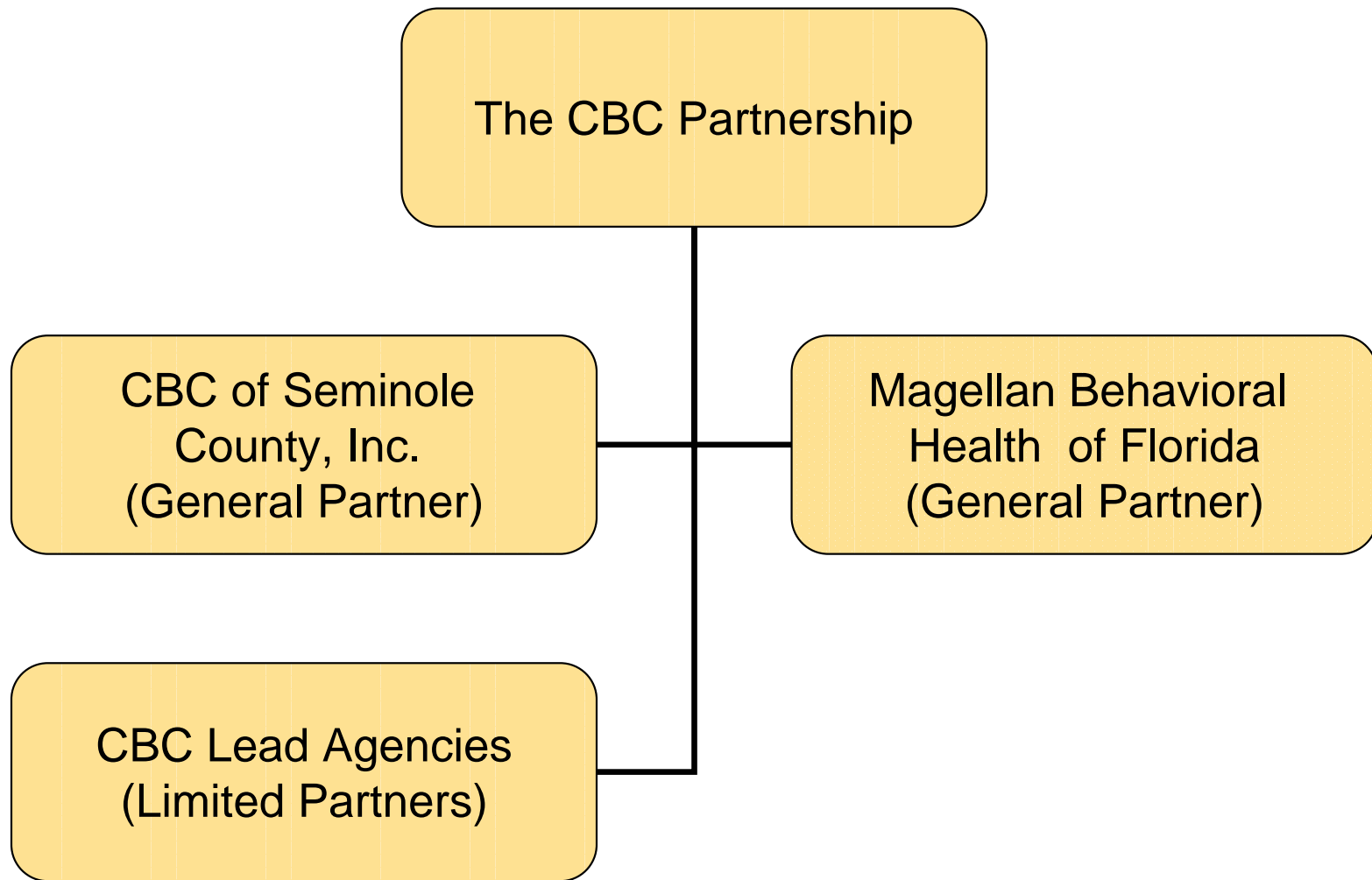
Historical Context

- Partnership between CBC Lead Agencies and Magellan was formed due to requirements of the RFP
- August 2006 the Florida AHCA announced its award of the CWPMHP to The Community Based Care Partnership, LTD
- February 2007 the Child Welfare Prepaid Mental Health Plan will be implemented

The CBC Partnership LTD



Legal Structure



CBC Partnership

- **General Partners**

CBC of Seminole is the general partner in the CBC Partnership and is the primary liaison/contract manager with AHCA and other CBCs

Magellan of Florida is the general partner who provides the financial resources to meet the capitalization requirements of AHCA, underwrites the financial risk and manages the day-to-day administrative services the program.

- **Limited Partners.**

Multiple CBCs throughout Florida have entered into a contract with the CBC of Seminole County to carry out the operational requirements of the ACHA contract at the local level

Shared Governance

- Operating Committee with 50% participation by CBCs and Magellan
- Approve provider network, rates, & methodology
- Approve clinical policy including medical necessity criteria and work flows
- Receive and utilize QI and community stakeholder input in program re-design

Partnership Staff

Employed by the Florida Coalition for Children

- Project Director
- Specialized Therapeutic Foster Care Coordinator
- Therapeutic Group Care Coordinator

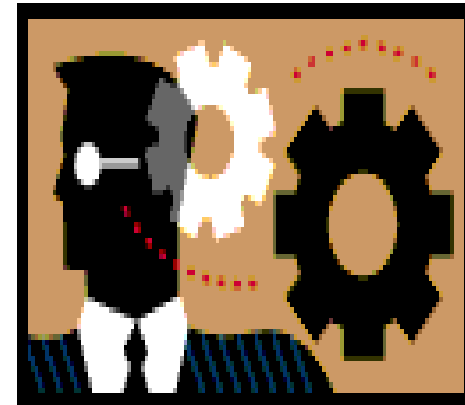


Magellan Behavioral Health Services of Florida, Inc.

- Magellan Behavioral Health of Florida, Inc. (Magellan) was established in 2004 as a Florida corporation dedicated to providing managed behavioral health services to Florida's Medicaid eligible populations.

Magellan Staff

- Sr. Account Executive
- Customer Service Associates
- Care Managers
- QI Staff



Features of the Program

- Covers Medicaid eligible **children** enrolled in HomeSafenet throughout Florida (excludes Areas 1 & 6)
- Does NOT cover parents
- Does NOT cover Medically Needy (“spend-down”) population
- There is NO retroactive eligibility for this program

Features of the Program

- Covers allowable Medicaid services as described in the AHCA Handbook with the addition of new services as included in the Proposal to AHCA
- Does NOT cover services prior to enrollment in HomeSafenet
- Recipients may access any provider in the contracted network (No wrong door)

Magellan's Role

- Assuring Medically Necessary Services are delivered
 - Definition of Medical Necessity (AHCA)
 - Community Behavioral Health Services Coverage and Limitations Handbook
 - Medical Necessity Criteria by Level of Care
 - Authorizations and Concurrent Review

Care Management - Authorizations

- No prior authorizations for traditional outpatient services
- Initial authorizations for other services completed by Magellan through consultation with CBC “Point of Contact”
- Concurrent review by Magellan in consultation with the CBC and the providers

CBC ROLE

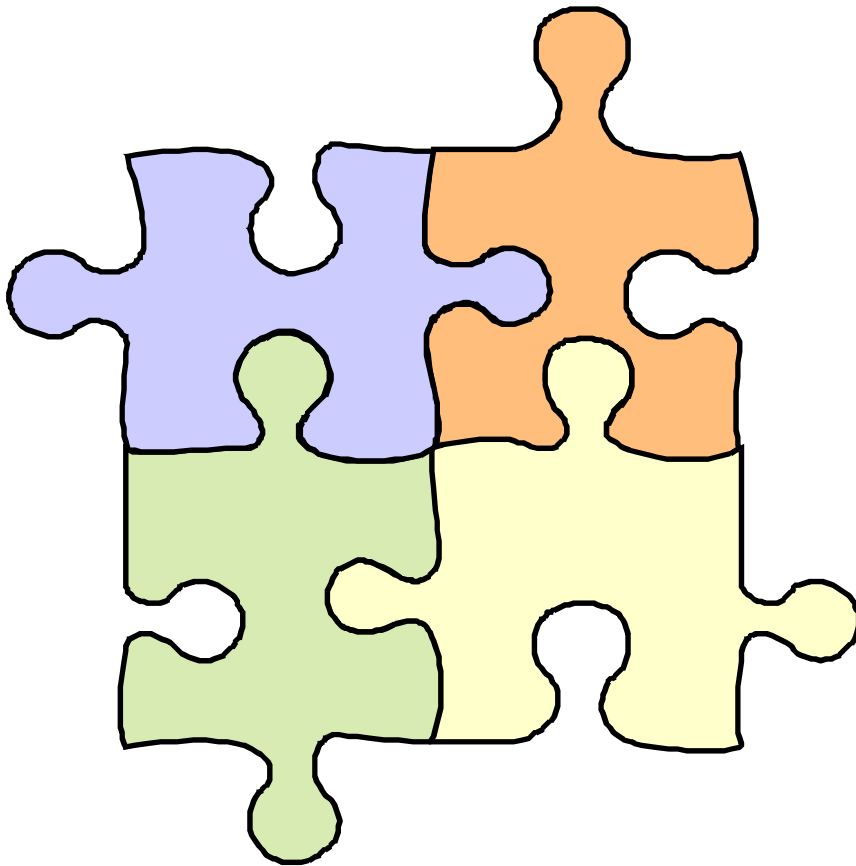
- Provide first line of review for eligibility criteria to avoid delays in authorizations
- Serve as link between provider and Magellan to ensure Child Welfare children receive appropriate and necessary services
- Provide Single Point of Access (SPOA) functions for Comprehensive Behavioral Assessments, and lead review of STFC, TGC and SIPP for dependency children

Partnership and Magellan can provide enhanced provider accountability, supported by clear communication regarding practice expectations and performance feedback, leads to continuous improvement in the processes and outcomes of care delivery.

CBC ROLE (Continued)

- Serve as link with SAMH office for prioritizing admissions to STGC and SIPP
- Communicate with providers and assist with training of provider staff
- Review provider trends in service delivery for quality improvement and service management

“Point of Contact” Role



- Single Point of contact with Magellan for STFC & TGC
- Lead MDT/Review process within the CBC
- SPOA for referrals and review of CBHA
- Lead renewal and discharge planning processes for STFC & TGC

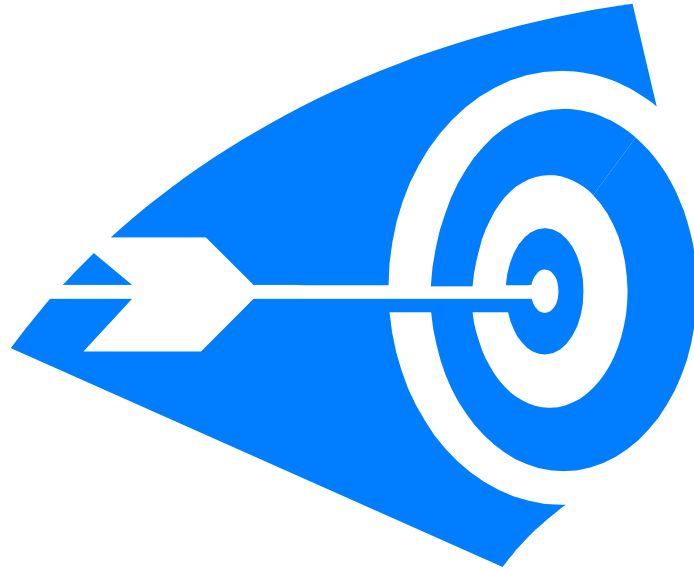
Transition Plan



Transition Timeline

	TBOS	PR/DT	TCM
February	X		
March		X	
April			
May			X

Q & A



The Community Based
Care Partnership, Ltd.

*A Partnership between CBC of
Seminole County, Inc. & Magellan
Behavioral Health of Florida, Inc.*